

Stage

1

1 Tuning note: A

Rhythm box

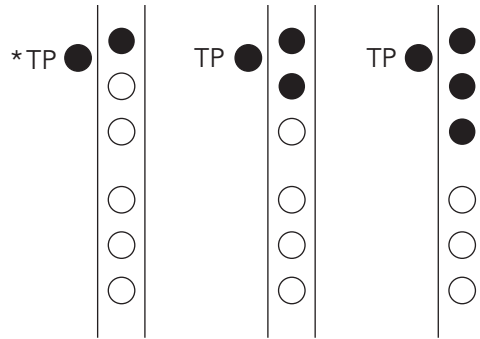
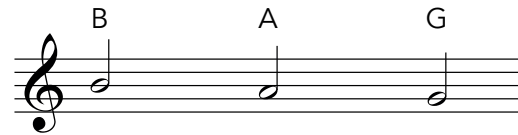
Semibreve (Whole note) 


Count: 4 beats

Clap: 

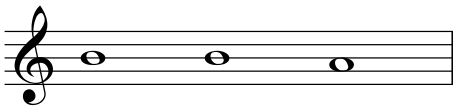
Count: 1 2 3 4 1 2 3 4 1 2 3 4

New notes B, A and G

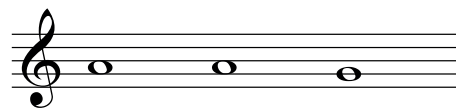


*TP  = Keep the left thumb on the lower of the two keys on the back of the oboe. Conservatoire oboe players should ignore this.

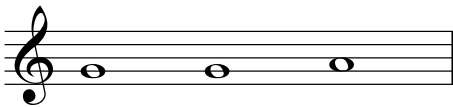
2 Going down



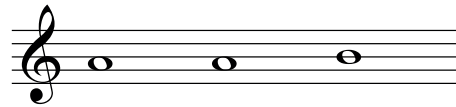
Further down



Going up



Top floor



Now try to play all four pieces continuously, taking breaths between floors!

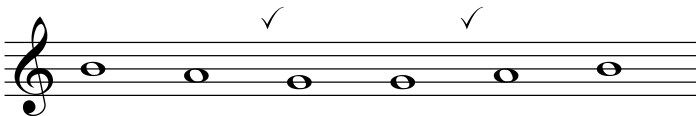
Top tip 1

Stand or sit up straight with feet slightly apart when you play.

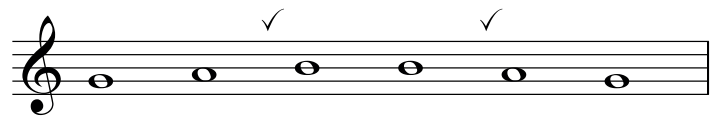
Top tip 2

Start each note with the tip of your tongue, as in 'ta'.

3 Saucer



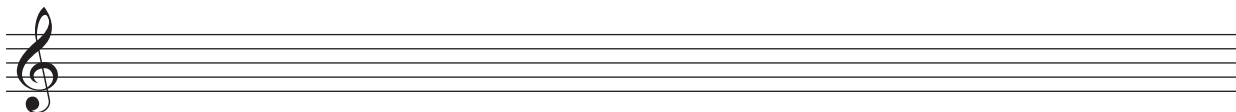
Rainbow



The breath mark ✓ above the music indicates where you should breathe.

Make up your own piece using B, A and G; it can be any length you like. You can either memorize it or, if you prefer, write the notes down on the following music stave. Remember to give it a title.

_____ by _____



Activity box

36 When the saints go marching in 

Traditional

Moderato

9 *f*

Detailed description: This musical score is for the piece 'When the saints go marching in'. It is marked 'Moderato' and is in common time (C). The key signature has one sharp (F#). The score consists of two staves. The first staff begins with a treble clef, a common time signature, and a first measure containing a quarter rest followed by a quarter note G4, a quarter note A4, and a quarter note B4. The second measure contains a quarter note C5, a quarter note B4, and a quarter note A4. The third measure contains a quarter note G4, a quarter note F#4, and a quarter note E4. The fourth measure contains a quarter note D4, a quarter note C4, and a quarter note B3. The fifth measure contains a quarter note A3, a quarter note G3, and a quarter note F#3. The sixth measure contains a quarter note E3, a quarter note D3, and a quarter note C3. The seventh measure contains a quarter note B2, a quarter note A2, and a quarter note G2. The eighth measure contains a quarter note F#2, a quarter note E2, and a quarter note D2. The ninth measure contains a quarter note C2, a quarter note B1, and a quarter note A1. The tenth measure contains a quarter note G1, a quarter note F#1, and a quarter note E1. The eleventh measure contains a quarter note D1, a quarter note C1, and a quarter note B0. The twelfth measure contains a quarter note A0, a quarter note G0, and a quarter note F#0. The thirteenth measure contains a quarter note E0, a quarter note D0, and a quarter note C0. The fourteenth measure contains a quarter note B0, a quarter note A0, and a quarter note G0. The fifteenth measure contains a quarter note F#0, a quarter note E0, and a quarter note D0. The sixteenth measure contains a quarter note C0, a quarter note B0, and a quarter note A0. The seventeenth measure contains a quarter note G0, a quarter note F#0, and a quarter note E0. The eighteenth measure contains a quarter note D0, a quarter note C0, and a quarter note B0. The nineteenth measure contains a quarter note A0, a quarter note G0, and a quarter note F#0. The twentieth measure contains a quarter note E0, a quarter note D0, and a quarter note C0. The score ends with a double bar line. A dynamic marking of *f* (forte) is placed below the first measure. A rehearsal mark '9' is placed at the beginning of the second staff.

37 The birch tree 

Russian folksong

With energy

7 *f*

Detailed description: This musical score is for the piece 'The birch tree'. It is marked 'With energy' and is in common time (C). The key signature has one sharp (F#). The score consists of two staves. The first staff begins with a treble clef, a common time signature, and a first measure containing a quarter note G4, a quarter note A4, and a quarter note B4. The second measure contains a quarter note C5, a quarter note B4, and a quarter note A4. The third measure contains a quarter note G4, a quarter note F#4, and a quarter note E4. The fourth measure contains a quarter note D4, a quarter note C4, and a quarter note B3. The fifth measure contains a quarter note A3, a quarter note G3, and a quarter note F#3. The sixth measure contains a quarter note E3, a quarter note D3, and a quarter note C3. The seventh measure contains a quarter note B2, a quarter note A2, and a quarter note G2. The eighth measure contains a quarter note F#2, a quarter note E2, and a quarter note D2. The ninth measure contains a quarter note C2, a quarter note B1, and a quarter note A1. The tenth measure contains a quarter note G1, a quarter note F#1, and a quarter note E1. The eleventh measure contains a quarter note D1, a quarter note C1, and a quarter note B0. The twelfth measure contains a quarter note A0, a quarter note G0, and a quarter note F#0. The thirteenth measure contains a quarter note E0, a quarter note D0, and a quarter note C0. The fourteenth measure contains a quarter note B0, a quarter note A0, and a quarter note G0. The fifteenth measure contains a quarter note F#0, a quarter note E0, and a quarter note D0. The sixteenth measure contains a quarter note C0, a quarter note B0, and a quarter note A0. The seventeenth measure contains a quarter note G0, a quarter note F#0, and a quarter note E0. The eighteenth measure contains a quarter note D0, a quarter note C0, and a quarter note B0. The nineteenth measure contains a quarter note A0, a quarter note G0, and a quarter note F#0. The twentieth measure contains a quarter note E0, a quarter note D0, and a quarter note C0. The score ends with a double bar line. A dynamic marking of *f* (forte) is placed below the first measure. A rehearsal mark '7' is placed at the beginning of the second staff. There are three accents (v) above the notes in the eighth, eleventh, and fourteenth measures of the first staff, and one accent above the note in the eighth measure of the second staff.

38 Au clair de la lune 

French traditional

With a celestial glow

9 *mf*

f *mf*

Detailed description: This musical score is for the piece 'Au clair de la lune'. It is marked 'With a celestial glow' and is in common time (C). The key signature has one sharp (F#). The score consists of two staves. The first staff begins with a treble clef, a common time signature, and a first measure containing a quarter note G4, a quarter note A4, and a quarter note B4. The second measure contains a quarter note C5, a quarter note B4, and a quarter note A4. The third measure contains a quarter note G4, a quarter note F#4, and a quarter note E4. The fourth measure contains a quarter note D4, a quarter note C4, and a quarter note B3. The fifth measure contains a quarter note A3, a quarter note G3, and a quarter note F#3. The sixth measure contains a quarter note E3, a quarter note D3, and a quarter note C3. The seventh measure contains a quarter note B2, a quarter note A2, and a quarter note G2. The eighth measure contains a quarter note F#2, a quarter note E2, and a quarter note D2. The ninth measure contains a quarter note C2, a quarter note B1, and a quarter note A1. The tenth measure contains a quarter note G1, a quarter note F#1, and a quarter note E1. The eleventh measure contains a quarter note D1, a quarter note C1, and a quarter note B0. The twelfth measure contains a quarter note A0, a quarter note G0, and a quarter note F#0. The thirteenth measure contains a quarter note E0, a quarter note D0, and a quarter note C0. The fourteenth measure contains a quarter note B0, a quarter note A0, and a quarter note G0. The fifteenth measure contains a quarter note F#0, a quarter note E0, and a quarter note D0. The sixteenth measure contains a quarter note C0, a quarter note B0, and a quarter note A0. The seventeenth measure contains a quarter note G0, a quarter note F#0, and a quarter note E0. The eighteenth measure contains a quarter note D0, a quarter note C0, and a quarter note B0. The nineteenth measure contains a quarter note A0, a quarter note G0, and a quarter note F#0. The twentieth measure contains a quarter note E0, a quarter note D0, and a quarter note C0. The score ends with a double bar line. A dynamic marking of *mf* (mezzo-forte) is placed below the first measure. A rehearsal mark '9' is placed at the beginning of the second staff. Dynamic markings of *f* (forte) and *mf* (mezzo-forte) are placed below the first and eighth measures of the second staff, respectively.

Activity box

Clap this rhythm:

Detailed description: A single staff of music showing a sequence of rhythmic patterns. It starts with a half note, followed by two eighth notes, then a quarter note, a quarter note, and a half note. This is followed by a quarter note, a quarter note, and a half note. Then, there are two eighth notes, a quarter note, a quarter note, and a half note. Finally, there are two eighth notes, a quarter note, a quarter note, and a half note. The staff ends with a double bar line.

What does  mean? _____

Give your teacher a lesson on how to play *legato*.

Make up an animal piece and try adding some slurs.

Detailed description: A blank musical staff with a treble clef and a common time signature, intended for a student to write their own animal piece.

